

DISCOVER

Sulphur Springs

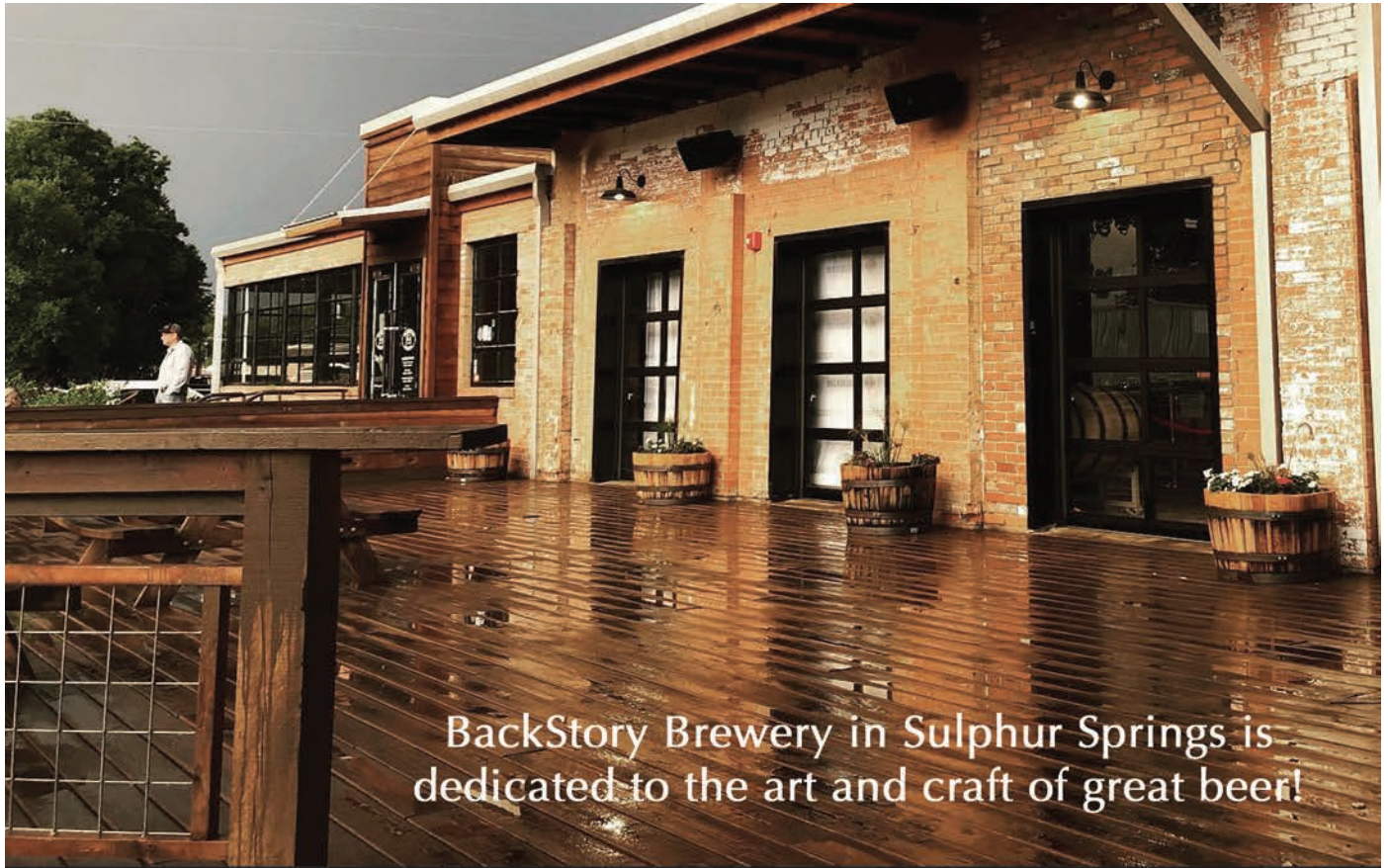
2023

Visitor's Guide

YOU'RE GOING TO LOVE IT HERE!

Shopping • Entertainment • Dining & *so much more!*

MAIN
STREET



BackStory Brewery in Sulphur Springs is dedicated to the art and craft of great beer!

backstorybrewery.com



Live Bands

Karaoke

Food Trucks



**BUY ONE
GET ONE
FREE**

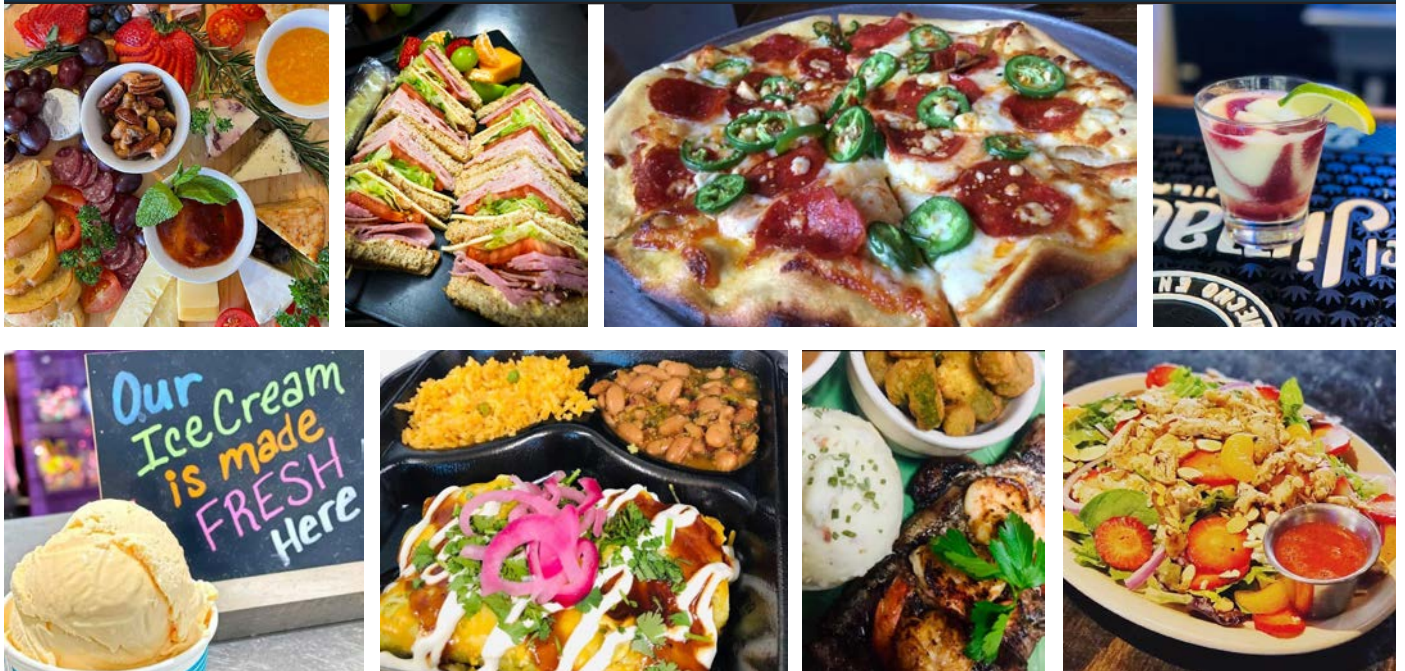
when you bring
in this ad!



211 Magnolia St. Sulphur Springs, TX

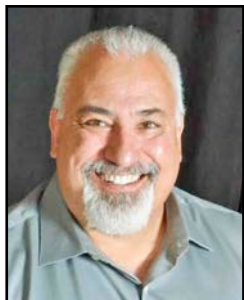


DINING DISTRICT



Come eat and enjoy life with us!

Visitor's Guide 2023



Dave Shabaz,
Publisher

Welcome to our 2nd annual edition of Discover Sulphur Springs, the official Visitor's Guide of Sulphur Springs and Hopkins County, Texas. If you've picked up this edition while here in Sulphur Springs, let me tell you, we are so happy that you are here, and this publication will help you navigate the many activities happening here and around Hopkins County.

If you are seeing this for the first time outside of our area, let me offer you my personal invitation to come visit our beautiful town and county. Sulphur Springs has the most beautiful and inviting downtown square in all of Texas, if not the country. No matter what you are looking for — shopping, dining, golf, fishing, hunting, boating, just to name a few things we are the place to visit and to live. Whether you are here for a day trip or a weekend, we have so much to keep you busy and entertained. The area also provides many hotel, B&B and Airbnb accommodations.

This Visitor's Guide is published by *The Sulphur Springs News-Telegram*, which has been the main source of local news here in Hopkins County since 1854.

We offer local news coverage twice a week, in the traditional print format as well as our website (www.ssnewstelegram.com), our Facebook page, twice-weekly email blasts and newsletters.

In addition, we publish our beautiful quarterly magazine, *Down Home East Texas*, and our yearly high school football preview magazine, *Friday Night Lights*. Each month, we feature a different special section, always with a local focus. We also publish *Country World* newspaper, the leading weekly agricultural newspaper in Northeast Texas.

So, welcome to Sulphur Springs and Hopkins County! We hope you enjoy your stay here. We are sure you will fall in love with the area, just like we have.

Hopkins County and Sulphur Springs — a great place to visit and a wonderful place to call home.



THE SULPHUR SPRINGS NEWS-TELEGRAM

200 Main Street Sulphur Springs, Texas
(903) 885-8663

Discover Sulphur Springs magazine is a publication of the Sulphur Springs News-Telegram and is published one time a year.

Discover Sulphur Springs is copyrighted by and a registered trademark of the Sulphur Springs News-Telegram in Sulphur Springs, Texas. Reproduction of any part of the publication is strictly forbidden without written permission from the Sulphur Springs News-Telegram.



Faith Huffman
Assistant Managing Editor



Faith Whittle
Graphic Artist



John Sellers
Contributing Writer



Butch Burney
Contributing Writer



JANET MARTIN REALTY

The premier source for your real estate needs in the heart of North East Texas. Our agents bring their hometown values & years of experience, helping buyers & sellers. If you're looking for expertise, diligence, & top-notch customer care you can trust, Janet Martin Realty is the best in the business.



1325 South Broadway
Sulphur Springs, TX 75482

903-885-1234

janetmartinrealty.com



Residential * Farm & Ranch * Recreational * Lake * Investment * Commercial

A REAL ESTATE HOTSPOT



Discover what newcomers know about Hopkins County

- Quaint, small-town living with a European flair of outdoor eating, boutiques, & thriving downtown center
- An active community of Cultural Arts, annual events, & opportunities for gathering with neighbors
- Minutes from Lake Fork, Cooper Lake, Lake Cypress Springs & Bob Sandlin Lake
- Modern amenities, friendly people, & scenic country drives
- Convenience of being 90 Minutes from the center of downtown Dallas



Janet Martin
Owner | Broker



Danny
Blount



Jed
Walker



Sheri
Autrey



Kati
Adair



Austin
Street



Tom
Hendricks



Tonya
Bradford



Kolby
Brown

Residential * Farm & Ranch * Recreational * Lake * Investment * Commercial

4 Real Estate Benefits of Living in Hopkins County

1. **New Subdivision Developments** -- Upcoming plans to build new homes provides more opportunities for buyers wanting a more customized home
2. **Smaller acreages of land available** -- Pick tracts ranging from 5 to 25 acres & find space to homestead on your own hobby farm



3. **Business-friendly community with a mix of locally-owned businesses & big-box stores** -- Choose between nationally-owned or popular locally-owned restaurants, ice cream shops, coffee cafe's, clothing boutiques or chain stores for a vibrant place for future business owners to land
4. **Diverse real estate options** -- Find real estate investment opportunities from city homes to farm & ranch homes to lakeside homes to large tracts of land for horses, livestock, or crops plus commercial buildings

Info Provided by:





INVEST IN YOUR FUTURE.

- ★ Retirement & Estate Planning
- ★ Annuities & Mutual Funds
- ★ Stocks & Bonds
- ★ 401(k) & IRA's
- ★ College Savings Plans

903-439-3075

OFFICES IN ALLIANCE BANK
100 JEFFERSON ST. W.
SULPHUR SPRINGS, TX 75482



CHETTAMRA ALEXANDER
FINANCIAL ADVISOR, RJFS

SECURITIES OFFERED THROUGH RAYMOND JAMES FINANCIAL SERVICES, INC. MEMBER FINRA/SIPC, AND ARE NOT INSURED BY BANK INSURANCE, THE FDIC OR ANY OTHER GOVERNMENT AGENCY, ARE NOT DEPOSITS OR OBLIGATIONS OF THE BANK, ARE NOT GUARANTEED BY THE BANK, AND ARE SUBJECT TO RISKS, INCLUDING THE POSSIBLE LOSS OF PRINCIPAL. INVESTMENT ADVISORY SERVICES OFFERED THROUGH RAYMOND JAMES FINANCIAL SERVICES ADVISORS, INC. ALLIANCE BANK AND ALLIANCE BANK FINANCIAL SERVICES ARE NOT REGISTERED BROKER/DEALERS, AND ARE INDEPENDENT OF RAYMOND JAMES FINANCIAL SERVICES.

Protecting what matters most to *You!*

GALYEAN
INSURANCE AGENCY

Personal | Life | Health | Business

877-936-7873

227 Connally St. Sulphur Springs, TX 75482

Other locations in Greenville & Rockwall

www.galyean-insurance.com





Innovative Local Orthopedic Care

Article Provided by CHRISTUS

The recent trend in orthopedic care has more doctors practicing in large cities. Most surgeries occur in urban hospitals, so patients must travel for care. However, in Sulphur Springs, patients can access world-class orthopedic care at the CHRISTUS Trinity Orthopedic Clinic. Travel isn't necessary; the clinic provides expert care for any orthopedic injury or condition.

Christopher Meltsakos, MD, an orthopedic surgeon and fellowship-trained sports medicine doctor at the clinic, loves helping injured athletes. His patients benefit from his extra training and passion for healing.

"I realized as an orthopedic doctor I can help athletes get back to the sports they love," said Dr. Meltsakos. "In a short time, they are playing at the same level as before the injury."

Christian Douthit, MD, an orthopedic surgeon and fellowship-trained hand specialist, works with Dr.

Meltsakos at the clinic. He is an expert in hand and shoulder problems, peripheral nerve surgery, orthopedic trauma and sports injuries.

"I believe in meeting the needs of my patients through technical expertise and surgical care, but know it's also crucial to have open communication about the care plan," said Dr. Douthit. "When we work together, it's far more likely for our patients to have a great outcome, and that is our goal at the clinic."

The rest of the group includes Kyle Lemarr, athletic training manager; nurses; athletic trainers; physical therapists; radiology technologists; and an orthopedic-trained physician assistant.

The clinic's innovative sports medicine program helps athletes stay in the game, providing care for 22 local schools. On Saturdays in the fall, student-athletes can

attend free walk-in clinics. Young athletes evaluated in the morning receive results that afternoon. X-rays are free; if an MRI is needed, the clinic will work with the athletes' insurance company.

Every spring, the team provides free sports physicals. Hosted at Hopkins County Regional Civic Center, around 850 students took advantage of the program in 2022.

Some coaches bus students to ensure that athletes receive their physical before summer workouts start.

Taking Sports Medicine Care on the Road

The Mobile Athletic Training Room (MATR) and crew attend every Sulphur Springs home football game. When Sulphur Springs plays away, MATR rotates to other high school home games. MATR is available due to a generous gift from the Hopkins County Health Care Foundation and Alliance Bank.

MATR is a fully functional extension of the clinic on wheels. Doctors assess injured athletes immediately, avoiding trips to the emergency department. The doctor, athletic trainer and radiology technologist have access to an AED (Automatic External Defibrillator), casting and splinting materials and x-ray. Once cleared, athletes can safely return to play. MATR is free for student-athletes.

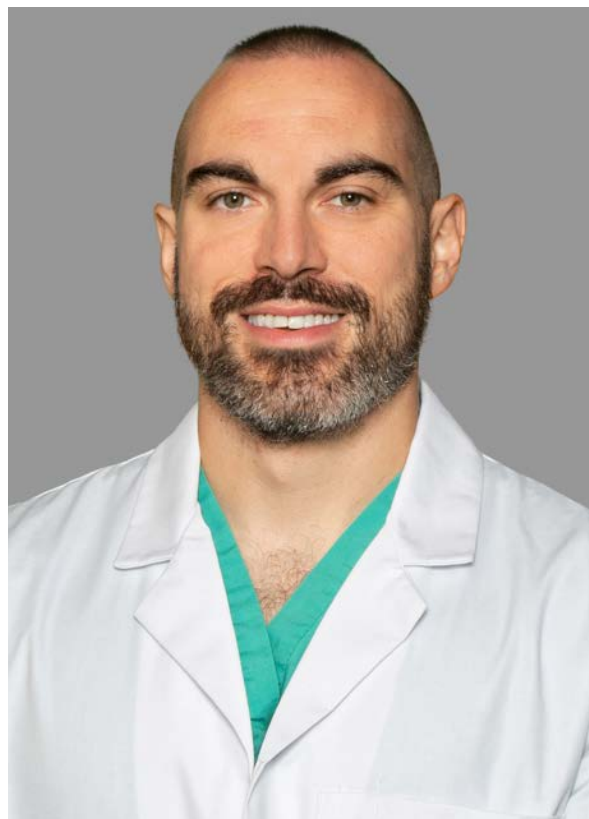
Orthopedic Surgeries Close to Home

Doctors Meltsakos and Douthit perform advanced orthopedic surgeries at CHRISTUS Mother Frances Hospital–Sulphur Springs.

For almost 75 years, the hospital has cared for the community. Mother Frances is the first and only hospital in the area to offer the transformational Stryker's Mako® Robotic-Arm Assisted Partial and Total Knee Replacement. For rehabilitation, patients have access to the Mother Frances state-of-the-art Physical Therapy Outpatient Clinic.

The CHRISTUS Trinity Orthopedic Clinic continuously improves its capabilities to meet community needs. The clinic recently introduced Platelet Rich Plasma (PRP) injections. A PRP injection uses a patient's plasma to help heal orthopedic injuries. It's minimally invasive, effective and helps patients avoid painkillers.

"I'm proud the team is living our mission to extend the healing ministry of Jesus Christ," says Kyle Lemarr. "In the community or back at the clinic, we can see, diagnose and treat patients for any orthopedic condition."



Christopher Meltsakos, MD



Christian Douthit, MD



Taking orthopedic care a step further.

No two patients are the same - a good treatment plan should be just as unique. CHRISTUS Orthopedics & Sports Medicine Institute is ready to assist with faith-based compassionate care, close to home. Our team of world-class orthopedic and sports medicine specialists provide treatment for injuries and chronic conditions of bones, joints and muscles in one centralized location for convenience and ease of care.

- Orthopedics
- Sports Medicine
- Joint Replacement
- Hand and Wrist Surgery
- State-of-the-art Rehabilitation Center
- Cutting-edge diagnostic imaging

Schedule an appointment today
at **903.885.6688.**



CHRISTUS[®]
Orthopedics & Sports
Medicine Institute

CHRISTUS Trinity Clinic Medical Building 5
103 Medical Circle | Suite B | Sulphur Springs | TX 75482
903.885.6688 | CHRISTUShealth.org

WYATT'S TOWING & RECOVERY INC. 903-885-7888

Best Service in your Area
We work with your schedule and offer 24 hour tow truck service and emergency roadside assistance to help you get back on the road fast. We are experts in providing worry free towing and leverage modern equipment to tow your vehicle to eliminate damages and accidents.

**ROUND THE CLOCK SERVICE
24 hours a day!**

Give us a call
(903) 885-7888



Heavy Duty Towing



Roadside Assistance



Emergency Towing

SULPHUR SPRINGS, TX ♦ WINNSBORO, TX ♦ MINEOLA, TX
www.wyattstowingandrecovery.com

Corporate, population growth - tangible signs of thriving community



Hopkins County is a thriving community, with downtown Sulphur Springs as its heart.

Sulphur Springs' designation as Celebration City is more than just a reflection of the many who come to enjoy the dining, shopping and annual events. The community celebrates a rich heritage, while welcoming new friends, neighbors and businesses.

Several have visited and enjoyed the community so much, they decided not to leave.

Sulphur Springs' location about an hour's driving distance from Dallas as well as the Oklahoma, Louisiana and Arkansas borders makes Sulphur Springs an attractive location for investors and industries that ship products across the country.

For instance, a Portland-based business a couple of years ago expanded its operations to include a plant in Sulphur Springs. After maxing out the property that once

held a bottling company, the business decided to move its headquarters to Sulphur Springs. A California pet food business also relocated its operations to Sulphur Springs due to Texas' location in the middle of the country, which makes shipping of fresh products a bit easier.

Cooperative efforts of Sulphur Springs-Hopkins County Economic Development Corporation and local officials have been largely responsible for gradual growth in many different types of businesses in Hopkins County, offering a variety of incentives which make the community even more attractive and relocation or development even more desirable to merchants, small and large businesses, financial institutions and industries.

The EDC has land that's been purchased locally and can be used to provide options for industries to move to Sulphur Springs.

The City of Sulphur Springs worked with the EDC and

other taxing entities to bring a huge corporation to Hopkins County, to open one of its first plants in the country. It will be located on city-owned property, revitalizing land previously utilized as a coal mine. The project promises a \$300 million investment and is expected to create 315 jobs.

New and expanded businesses aren't the only growth in Hopkins County. The population is rising as more people fall in love with the area and decide to relocate here, and others are moving to fill some of the new jobs created with the business growth.

"We are in the path of growth," Sulphur Springs City Manager Marc Maxwell said. "We are seeing the first signs of movement in development coming from the west to build subdivisions. We expect growth, more rooftops, in the next 20 years."

While many areas are beginning to feel a recession, locally, it's not being felt as much.

"We have the party, but not the hangover," Maxwell said with a laugh.

He noted that in 2008, Sulphur Springs did not feel the financial strain as much as other areas in terms of sales tax.

In 2020, sales tax funds in Sulphur Springs grew. In fact, sales tax returns have been up in the city for the past five years, the city manager pointed out.

City officials are working with developers to better prepare for growth, by offering builders incentives to build on identified existing properties in the city. The 380 agreements allow builders to apply to build single family residences on properties with existing utilities that can be tapped into without overtaxing the existing infrastructure in place within the city limits. One has only to drive down Ross Street or Beckham Street in Sulphur Springs to see the new homes recently constructed and going up to provide additional housing, thanks to the infill housing program.

Others are constructing subdivisions in underdeveloped areas in and around

town, as well as larger homes in subdivisions further out in the county. The county has developed and revised subdivision requirements to better regulate construction in the county, ensuring all construction requirements are met and checking to be sure septic systems are sufficient for the buildings going up on a property.

Families are moving into Sulphur Springs as well as surrounding communities, requiring some county school districts to expand their facilities to accommodate the increased number of students. Sulphur Springs ISD is also exploring options to update, expand and grow district facilities to meet the growing student population.

A new luxury RV park has been approved along Loop 301, just off State Highway 19/154, to provide additional spaces for short term stays.

And, there are more plans in place to update parks, grow the downtown area as well as the wide variety of industries and businesses in town.



DID YOU KNOW

A fully loaded 18 wheeler weighs 80,000 pounds?

**THAT'S MORE THAN AN
M4 SHERMAN ARMY TANK
AND MORE THAN A
BOEING 7327 PLANE!**

A CRASH BETWEEN A SEMI-TRUCK AND ANOTHER VEHICLE CAUSING INJURIES OR FATALITIES HAPPEN EVERY 15 MINUTES AND TEXAS LEADS THE NATION IN FATAL TRUCK ACCIDENTS.

TEXAS HAS THE WORST LARGE TRUCK SAFETY PROBLEM IN AMERICA. FOR EVERY CASE THAT IS FILED WE ARE ONE STEP CLOSER TO SAFER ROADS FOR YOUR FAMILY AND MINE.

IF YOU HAVE BEEN INVOLVED IN A TRUCK WRECK, YOU NEED A LAW FIRM THAT NOT ONLY KNOWS THE DANGERS OF MASSIVE TRUCKS ON OUR ROADS BUT IS EXPERIENCED WITH ALL THE REGULATIONS AND RULES GOVERNING TRUCKING COMPANIES.

MCKAY LAW IS TEXAS TOUGH!



**Call Today for your
FREE consultation.
WE ONLY get paid
when we win.**



(903)-INJURED

YOUR LEGACY, OUR FINANCING

- Rural Land •Rural Homes •Home Construction
- Barndominiums •Agriculture •Operating Expenses
- Equipment and more

www.LegacyACA.com
303 CONNALLY STREET
SULPHUR SPRINGS, TX



Legacy
Ag Credit ACA
Financing Your Legacy



**54TH ANNUAL
HOPKINS
COUNTY STEW
CONTEST**
OCTOBER 28, 2023



TOLLESON FAMILY MARKET



Hand Crafted Fresh Smoothies & Smoothie Bowls

Our smoothies and smoothie bowls are made by hand with whole fruit, fruit juice, and non-dairy beverages.



Smoothies



Smoothie Bowls



Meet Your Local Farmers

At our fresh market, we have a wide array of local farm goods from local farmers. Come meet your local farmers who are raising high quality and healthy food for you and your family.

Fresh Produce, Meat, Dried Goods, Sourdough Bread, Jams & More

We have a wide range of farm goods that are locally grown, raised, and made by small family farmers in our area. Our sourdough bread is made traditionally by hand by Mrs. Tolleson.



All Natural Candles, Wax Melts, Handmade Soap, Seasonal Flowers, & More

Our products are local and natural. Our all natural candles are made by hand by Mrs. Tolleson and are able to be used as a moisturizer on your skin.



📞 903-575-8191

📍 300 Connally Street,
Sulphur Springs, TX



hopkinschamber.org

We are fortunate at the Hopkins County Chamber of Commerce that our home is in downtown Sulphur Springs, because we have so many visitors who stop in our office; and they all have one thing in common – an open appreciation for the wonderful little city they are visiting.

We often say that we wish our citizens could sit with us for a week and hear the praise that visitors pour on our Celebration City. We truly believe Sulphur Springs is a one-of-a-kind gem. We have a combination of small town living, modern boutiques and a work/life balance that includes outdoor activities and cultural amenities.

If you choose to visit Sulphur Springs, you won't be disappointed. Starting in the spring, there is something happening virtually every weekend, including Rotary's Claws for a Cause crawfish boil, the Chamber's annual golf tournament, the Healthcare Foundation's spectacular gala, the Freedom Ball to recognize our veterans, the Patriot Sporting Challenge, downtown markets, Friday night movies on the plaza, and Saturday evening markets.

In the summer, we have our annual

Dairy Festival and hot air balloon launch; Independence Day concert and fireworks show; glorious days for fishing, boating and swimming; a downtown splash pad; and a newly renovated Pacific Park with a cross-fit workout pad open to everyone and covered basketball courts.

Join us in October for the World Championship Hopkins County Stew Contest, where we have 150-plus pots of chicken and beef stew to feed about 7,500 people. It's the largest single event in the county!

Play at Kids Kingdom and the skate park at the city's Buford Park, go walking or jogging around Coleman Lake, and dip a hook in Peavine Pinion Pool or nearby Lake Fork, Cooper Lake and Lake Cypress Springs. We have dozens of locally-owned boutiques and restaurants, including locally brewed beer and locally bottled wine. We have an active theater on Main Street, as well as incredible vocal and orchestral groups that offer the best in Northeast Texas.

If you decide to join us for a lifetime, we welcome you! Our economic base is solid with a three-pronged mix of agriculture, manufacturing and retail that keeps our economy strong and diverse.

Our schools are known for award-winning academic excellence and state championship-caliber athletic prowess. We have a strong medical community, an active library and a thriving downtown.

Where else can you find glass bathrooms on the square, a 125-year-old functioning courthouse, a full-size football field under a dome at the high school, a museum dedicated to the dairy industry and a stew festival that brings in 7,500 people? It's not Dallas, Houston or San Antonio. It's Hopkins County.

So, I hope you will grow to love Sulphur Springs and Hopkins County whether you're new to the area or simply visiting. You'll love this place!



Butch Burney

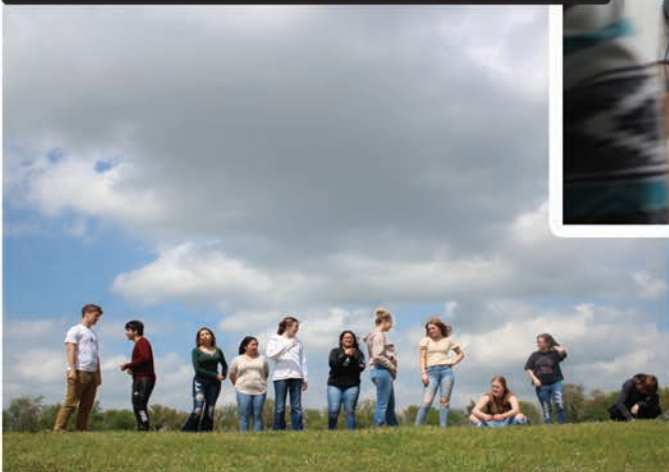
President/CEO, Hopkins County Chamber of Commerce



Best School in Hopkins County



Best Kids in the State!



Como-Pickton ISD

Sulphur Springs Public Library



Built in 2000 as a state-of-the-art facility, the Sulphur Springs Public Library symbolizes the city's dedication to improving the quality of life for Hopkins County residents. The building is 25,000-square feet and boasts more than 50,000 visitors per year.

The library has public access computers available to children, teens and adults, along with meeting rooms, wireless printing, legal forms, fax, notary and scan services. The library is open 6 days a week and offers so much more than books to check out. Audiobooks, large print, DVD, easy readers, Playaways, board games, graphic novels, read-aloud books and STEM kits are available at this site.

With over 45,000 items, the fiction collection (adult, intermediate and juvenile combined) encompasses 70% of the checkouts at the library. The continued focus on emerging literacy has led to partnerships with local schools and programs for the children of Hopkins County, with the main focus being early literacy.

As the digital content has become more accessible, the online content offered at the library has increased as well: with the addition of eBooks and eAudiobooks through Overdrive, language learning with Pronunciator, study guides, job search assistance, resume assistance, driver's handbooks and practice tests, Career Online High School, Talking Book Program, and the ability

to keep track of your books and reserves through the app Librista.

The library is the home of the Leo St. Clair Music Box Collection that was digitized through a grant from Texas A&M Commerce. It is one of the largest collections of its kind in the world, which makes the library a must-see for visitors as well as local citizens. The collection has been featured on many online travel sites: Trekaroo.com, AAA Travel, Trip Advisor, TravelTexas.com; on TV: PBS Daytripper with Chet Garner and Texas Country Reporter; and in books such as

Oddball Texas and Daytrips from Dallas and Fort Worth.

The Sinclair WWII Collection holds a cherished place in the Sulphur Springs Public Library and Hopkins County. The World War II memorabilia collection was generously donated by Katie Sinclair, along with her collection of Kinkaid paintings that hang in prominent places throughout the library. This collection contains mementos of the life and marriage of local residents Buddy and Katie Sinclair, which spans 100 years. It allows library visitors to stroll through life in old-time

Hopkins County and experience an important part of our local heritage.

This library is more than just books. It offers people free access to a wealth of information that they often cannot find elsewhere, whether online, in print or in person. Libraries are the experts of information, selecting books relevant to the community, creating helpful programming and connecting people to information. "Google can bring you back 100,000 answers. A librarian can bring you back the right one."
– Neil Gaiman, Author

West Oaks Funeral Home

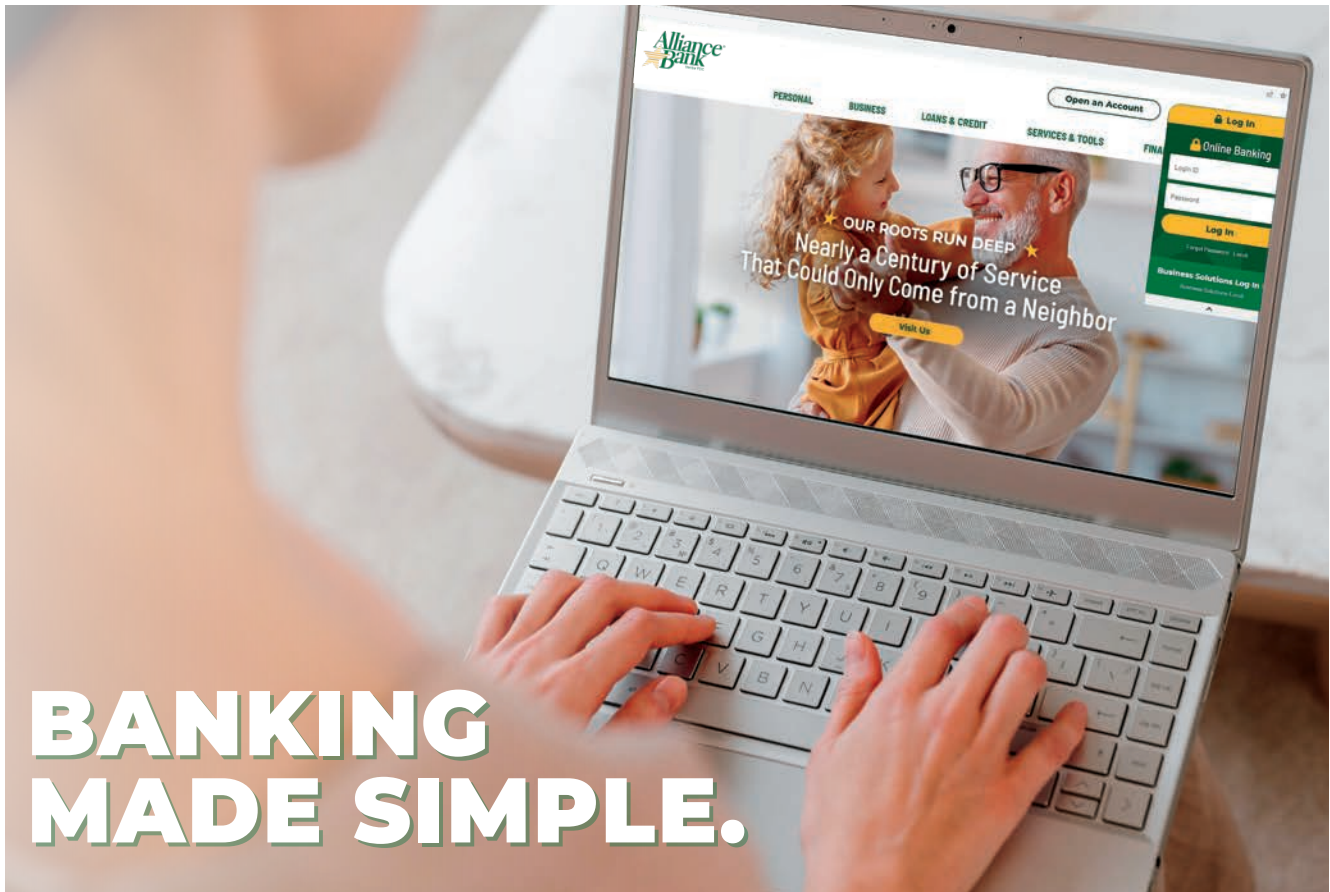
"Caring For Those We Serve"



Pre-Planning • Funerals • Cremations • Monuments

903-885-0787

www.westoaksfuneralhome.com | 500 South Hillcrest Drive



BANKING MADE SIMPLE.



Personal



Business



Loans

★ Personal Accounts

★ Mobile Deposit

★ Digital Wallet

★ Bill Pay

★ Business Accounts

★ ACH & Wires

★ Remote Deposit

★ Merchant Services

★ Residential

★ Jumbo

★ Construction

★ Refinance

Alliance Bank[®]
Member FDIC

1-877-903-2265

**100 Jefferson St W | 1226 S Broadway St | 1437 S Broadway St
Sulphur Springs, TX 75482**

Other locations in Greenville, Commerce, Wolfe City, Mt Vernon, Rockwall, and Plano



www.alliancebank.com





TESLA Electronic Vehicle Charging Stations Available in Sulphur Springs

Sulphur Springs is also a location for charging your Tesla electronic vehicle.
Located in downtown Sulphur Springs are eight Tesla Supercharger stations.

Address: 300 West Tomlinson St., Sulphur Springs, TX 75482
Phone: 877-798-3752

Charging: 8 Superchargers, available 24/7, up to 150 KW
EV Connector Types: TESLA
EV Network: TESLA



Shop
online!



Marlene's
Sass & CLASS
Boutique

**Kendra Scott • Consuela • Vintage Havana • Z Supply
Corral Boots • Dear John • Steve Madden + more**

212 Main St. | Sulphur Springs, TX | 903.335.8918 | marlenesassandclass.com





CELEBRATING 50 YEARS 1972 ★ 2022

WESTERN STORE



STORE HOURS -
MONDAY – SATURDAY
9:00AM – 6:00PM

 **@CIRCLEEWESTERN**

 **@CIRCLEE1972**

PRESENT THIS COUPON FOR



10% OFF*

YOUR NEXT PURCHASE

*DISCOUNT EXCLUDES CLEARANCE & CANNOT BE COMBINED WITH ANY OTHER OFFER

EXPIRES 12/31/2023

RENEW | REPAIR | REVIVE

(903)885-3561 • interstatebodyshopshop@hotmail.com • 1079 Rockdale Rd.







We are so excited to move into our **NEW 4,000 sq. ft. building.** Our new paint booth will help us to better serve all our loyal customers!



GSC ENTERPRISES, INC.

IMPACTING LIVES THROUGH EXCEPTIONAL SERVICE



GROcery SUPPLY COMPANY

IMPACTING LIVES THROUGH EXCEPTIONAL SERVICE





City of Sulphur Springs TEXAS



Sulphur Springs is a gem of a city, located in Northeast Texas. With almost continuous events going on year-round, there is always an opportunity to experience something new and unique.

Downtown dining, around our

award winning square, offers a variety of cuisine to appeal to all appetites.

The Veteran's Memorial on our downtown square commemorates and shows our pride in our veterans from, or currently living in, Hopkins County.

Sulphur Springs is famous for our one-way glass public restrooms on the downtown square. Having been mentioned in many articles and television shows, the ability to see out of our restrooms without seeing in is unique.

Sulphur Springs is the host to many softball and baseball tournaments, as well as horse and cattle shows, and rodeos. The local parks also offer miles of walking trails and water views.

The Southwest Dairy Muse-

um and Heritage Park are two locations many families enjoy. The surrounding lakes attract thousands of visitors annually, making Sulphur Springs a destination city.

Visitors can take advantage of the opportunity to witness a full solar eclipse here in Sulphur Springs on April 8, 2024, since we are in the direct path for the best viewing.

As you can see, there are activities for everyone. Plan your visit today to our little slice of heaven in Sulphur Springs and see why we are so proud!

See you then!

Doug Moore - Mayor



North East Texas Choral Society

How Can We Keep from Singing!
May 6-7, 2023 and December 2 & 3, 2023
and May 4 & 5, 2024

Celebrating 25 years of bringing choral arts to the community!

MAIN ST. THEATRE

225 MAIN STREET

HOME OF
COMMUNITY PLAYERS, INC.

www.communityplayersinc.com

MAIN ST. THEATRE **MST** 
LIVE THEATRE, MUSIC & MORE





TEXAS MODERN GASTROENTEROLOGY

DR. MENA MILAD, MD | DR. VIVIAN EBRAHIM, MD

BOARD CERTIFIED
GASTROENTEROLOGISTS

📞 903-558-2222

**COLON CANCER SCREENING, LIVER
AND DIGESTIVE ISSUES
CALL US!**

WWW.TXMODERNGI.COM

1402 MEDICAL DRIVE,
SULPHUR SPRINGS, TEXAS 75482

SULPHUR SPRINGS - POPULATION 15,995

WALKING TRAILS | FRESH PRODUCE | PARKS | MARKET | DINING





STAY ON POINTE.

Locally Owned and Operated
Modern Touches • Meeting Space
50" TVs • TV Casting • Local Murals

Clarion Pointe Sulphur Springs

411 Industrial Dr E • Sulphur Springs, TX 75482 • 903.885.6851
ssclarionpointe.com • sales@ssclarionpointe.com

INSURANCE YOU
CAN COUNT ON FOR



HOME



AUTO



BUSINESS



DIXON & DIXON
— INSURANCE —



CALL FOR A FREE QUOTE TODAY

903.885.6020

NEW LOCATION:

750 Wildcat Way, Suite B, Sulphur Springs, Texas 75482
Mailing address: PO Box 749, Sulphur Springs Texas 75483



EVENTS

Cinco de Mayo Celebration

Saturday, May 6, 2023

Celebration Plaza, 100 Church St.,
Sulphur Springs

Deep Routes Concert Series - Unspoken

Wednesday, May 17, 7 – 9 p.m.

Deep Routes Coffee, 215 Shannon Rd
East, Sulphur Springs

Choral Society Spring Concert

Saturday, May 6, 7 – 9 p.m.

Hopkins County Regional Civic Center
Auditorium, 1200 Houston St.,
Sulphur Springs

Celebration Market - Every Saturday

Starting Saturday, May 20, 6 – 10 p.m.

Celebration Plaza, 100 Church St.,
Sulphur Springs

Wine Tasting in the Garden

Saturday, May 27, 5:30 – 7:00 p.m.

420 W Park St., Sulphur Springs

Nature Walk & Talk

Thursday, June 1, 11 a.m. – 12 p.m.

420 W Park St., Sulphur Springs

Dairy Festival Hot Air Balloon

Rally & Glow

Friday, June 9-10, 5:30 – 9:00 a.m.

Shannon Oaks Church, 1113 Shannon Rd
E, Sulphur Springs

Dairy Festival Coronation Pageant

Saturday, June 17, 6 p.m. – 9 p.m.

Hopkins County Regional Civic Center,
1200 Houston St., Sulphur Springs

Ink Masters Tattoo Expo

Friday, July 14, 1 – 11 p.m.

Saturday, July 15, 11 a.m. – 11 p.m.

Sunday, July 16, 11 a.m. – 9 p.m.

Hopkins County Regional Civic Center,
1200 Houston St., Sulphur Springs

Mary McDonald Piano Concert

Sunday, August 27, 2023, 6 – 8 p.m.

FBC Sulphur Springs, 116 Oak Ave,
Sulphur Springs

Northeast Texas Walk like M.A.D.D.

Saturday, September 16, 2023

Buford Park, Sulphur Springs

Cattleman's Classic & Ribeye Round-Up

Saturday, October 7, 2023

Celebration Plaza, Sulphur Springs

Main Street Uncorked

Saturday, October 14, 2023

Fall Festival Parade

Saturday, October 21, 2023

Annual Corvette Club Corvette Show

Saturday, October 28, 2023, 8 a.m. - 3 p.m.

Celebration Plaza, 100 Church St.,
Sulphur Springs

54th Annual Hopkins County Stew Contest

Saturday, October 28, 2023

Buford Park, 733 Connally St.,
Sulphur Springs

Turkey Trot

Thursday, November 23, 2023

Celebration Plaza, 100 Church St.,
Sulphur Springs

Fun for everyone!





Hunt Regional Healthcare

THE SPECIALIZED CARE YOU NEED
WHERE YOU NEED IT

*Providing innovative, compassionate,
expert care at multiple locations
throughout Northeast Texas.*



Visit **HuntRegional.org**

Contact@HuntRegional.org

903.408.5000

Sulphur Springs | Royse City | Rockwall | Greenville | Commerce | Leonard | Quinlan | Emory | Caddo Mills



BEAUTY
GRACE
lifestyle shop

- **STYLE**
- **WELLNESS**
- **GIFTS**



220 + 224 CONNALLY ST
SULPHUR SPRINGS, TX 75482

MON-SAT 10-6P, SUNDAY 12-4P

@SHOPBEAUTYGRACE

VITA BELLA

3-IN-1 FRANCHISE OPPORTUNITY

COFFEE, MILK TEAS &
REFRESHER DRINKS



Scan Now
For More Info

📍 218 Main Street
Sulphur Springs, Texas 75842

✉ info@vitabellacups.com
franchise@vitabellacups.com

☎ (903) 364-8605

🌐 www.vitabellacups.com/opportunity/



Visitor Guide



COOPER LAKE STATE PARK

2,560 acres of terrain with a 19,300-lake, offers a variety of water and land-based recreation for outdoor enthusiasts. Water sports fans can enjoy skiing, fishing, boating, and more than 25 miles of shoreline. Experiences here range from nature study and educational programs to horseback riding, picnicking, primitive to RV and cabin camping, bike and nature trails, bird watching, swimming, and sunbathing on one of two designated beaches.

LAKE FORK

The lake is world renown for trophy bass and is located just 15 miles south of Sulphur Springs on Texas Highway 154. The lake covers 27,000 surface acres, not only good for bass fishing, but crappie, catfish and bluegill, as well. Completed in 1980, Lake Fork gained the reputation for being the hottest bass fishing lake in Texas after its first state record bass was

caught in 1986.

COLEMAN LAKE PARK

The park opened in the spring of 2002. The main entrance is on the north service road of Interstate 30, recognizable by the Coleman water tower that marks the park's gated entryway. What sets this 200-acre park apart from the rest of its wooded nature trails? A 9-foot waterfall, fishing pier, and massive sports complex, which includes tennis courts, soccer fields, a disc golf course and tournament-rated baseball and softball fields. Amenities at Coleman Park also include walking and jogging trails, picnic areas, pavilion, a creek-fed lake, as well as a wading pool.

BUFORD PARK

Sulphur Springs' old city park is located at the west end of Connally Street. A one-acre castle playground built in 1997, known as Kids Kingdom, is one of the main features of these wooded grounds. This recreational area

includes lighted baseball fields, walking/jogging trails, gazebos, pavilion, a skateboard park, and basketball courts. In 2009, the park became home to the World Champion Hopkins County Stew Contest. In 2013, the Adult Leadership Class built a beautiful boardwalk around Peavine Pinion Lake. In 2022, the adult Leadership class chose Kids Kingdom as their project and are in the process of renovating the playground.

PACIFIC PARK

This park is a playground located on the city's east side at Martin Luther King Jr. Drive, between Ross and Beckham streets. This park also includes a splash and spray aquatic activity pad, which was completed in 2005.

SOUTHWEST DAIRY MUSEUM

Since 1989, Sulphur Springs has been home to the Southwest Dairy Museum. The center is housed in a beautiful 10,000-square-

foot facility built of white stone in typical dairy farm style. Their state-of-the-art exhibits are designed to accommodate large audiences in a timely manner. Here you will find the history of the dairy industry in the Southwest for the enjoyment and education of generations to come.

HOPKINS MUSEUM AND HERITAGE PARK

Step into the past at Hopkins County Museum and Heritage Park. The history of Hopkins County will come alive as you see the items used by early residents and walk among historical buildings in the 11-acre park. Some notable structures are the working blacksmith shop, the first brick home in the county, a country store, post office, syrup mill, grist mill, log houses, and farm buildings. The museum and park bring the heritage of Hopkins County to life.



Photography provided by
Dakota Diener, Split Image

THE SULPHUR SPRINGS LIBRARY

Built in 2000 as a state-of-the-art facility, Sulphur Springs Public Library symbolizes the city's dedication to improving the quality of life for residents. More than three times the size of the previous facility, the new building allows the library to offer much more than before and boasts more than 50,000 visitors per year. The library has 27 public access computers, which are available to children, teen, and adult library patrons. The addition of digital eBooks and eAudiobooks in 2014 greatly increased the number of patrons using

the library for pleasure and informational reading.

The Hopkins County Genealogical Society Research Library moved into the large conference room area of the library building in 2015 and has found the public library a willing partner in genealogy endeavors.

This is also the home of the Leo St. Clair Music Box Collection, one of the largest of its kind in the world, which makes the library a must-see for visitors as well as local citizens. The collection has been featured on the internet: Trekaroo.com,

AAA Travel website, Trip Advisor, TravelTexas.com; on TV: an episode of PBS's The Daytripper with Chet Garner and an episode of syndicated Texas Country Reporter; and in books: Oddball Texas, and Daytrips from Dallas and Fort Worth. It is also viewable on the library website, www.sslibrary.org under Digital Resources.

The Sinclair WWII collection holds a cherished place in the Sulphur Springs Public Library and Hopkins County. It contains mementos of the life and marriage of local residents Buddy and Katie Sinclair, which spans 100 years. Take

a stroll through life in old-time Hopkins County and experience an important part of our local heritage.

SULPHUR SPRINGS INDEPENDENT SCHOOL DISTRICT

"Educating All Students to Their Fullest Potential"

Sulphur Springs Independent School District is composed of over 4,400 students and almost 700 employees. The district has nine campuses: Douglass Early Childhood Learning Center early childhood-Pre-K; Bowie, Bush, Lamar and Travis Primaries grades K-3; Sulphur Springs Elementary School grades 4-5; Sulphur Springs



Middle School grades 6-8; Sulphur Springs High School grades 9-12; and the Austin Academic Center. Believing that all children can learn, the district works to motivate each student to reach their full personal potential.

Sulphur Springs ISD students are held to high academic standards and regularly perform well on state assessments and are competitive in academic UIL. The district, along with each individual campus, continues to meet performance indexes and earn distinction designations within the state accountability system.

Recognizing the importance of technology in today's world, SSISD has made the commitment to implement a 1:1 technology initiative by placing an electronic device in the hands of each student from Pre-k to 12th grade. iPads, tablets, or laptops grace the classrooms of each building within the district. Instructional staff work diligently to facilitate the daily incorporation of technology into the curriculum. Students are being prepared to contribute and compete within the

everchanging world in which we live.

Sulphur Springs Independent School District offers an athletic program that works to develop a well-rounded student athlete; striving to teach character, discipline, work ethic and team unity, both on the playing field and in the classroom. Competitive sports offered at the varsity and sub-varsity levels include football, volleyball, cross country, tennis, basketball, soccer, baseball, softball, golf, powerlifting and track.

Fine arts are also an emphasis of the Sulphur Springs Independent School District. The staff and administration of SSISD believe that all students are benefitted by the skills, emotional development, cultural awareness and team building that are part of arts education. In turn, the arts are proven to increase success in the core curriculum classrooms. Fine arts courses offered are theatre arts, band, choir, strings, dance, drill team, and elementary music and choir and other art classes.

Sulphur Springs High School is very proud of

their Career and Technical Education Program. CTE empowers students to attain the technical and the soft skills necessary to facilitate student leadership and, ultimately, to gain a competitive edge for college and career readiness through programs emphasizing real-world, real-life skills. The vision is that each CTE student will graduate SSHS ready for college, career, military and life.

SSISD is a proud member of the Hopkins County Chamber of Commerce and welcomes all to visit district campuses!

VETERANS MEMORIAL
Another aspect of the community's dedication to preserving the past includes the Hopkins County Veterans Memorial project.

The overall goal for the memorial is to "perpetuate the memory of Hopkins County veterans who have served their country with honor, that their dedication, deeds and sacrifice be a constant source of motivation toward great accomplishment and patriotism."

Veterans who served

honorably in the U.S. military – the Army, Navy, Air Force, Marines, Coast Guard, Merchant Marines, including Reserves and National Guard, and are a current or past resident of Hopkins County are eligible to have their name included on the memorial. Any deceased veteran who has served honorably and whose final place of rest is in Hopkins County is also eligible.

HOPKINS COUNTY REGIONAL CIVIC CENTER

This multi-purpose facility is designed to offer you up to 7,500 square feet of meeting/banquet space with movable walls to offer up to four separate rooms starting at 1,000 square feet. You will also find a climate-controlled coliseum; a 40,000-square-foot livestock pavilion; a 60,000-square-foot equine pavilion; and a 1,250 seat auditorium. The Coliseum is an ideal livestock facility with elevated sale ring, in-house sound system, six Priefert bucking chutes, and plenty of Priefert panels for dozens of pens and gates. There are more than 2,500 comfortable bleacher seats with back rests for the two

major rodeos held annually, in addition to many cuttings events, livestock shows, livestock sales, circuses, as well as corporate seating for up to 5,000. This facility has 3 concession stands and one show office.

THE EQUINE PAVILION

Our larger arena, built in 2009, hosts various horse shows, ropings, dog shows, and other community events. This covered arena features three large fans to help cool the arena in the summer, as well as an in-house sound system, announcer box, and Priefert roping chutes. This facility is adjacent to 38 RV sites with power for 50 amp, 30amp and 110v stations with water and a sewer station on property.

THE EXHIBIT HALL

Remodeled in 2013, our 7,500-square-feet of meeting and banquet space is one of the most luxurious in the area. With moveable walls, the hall can be configured to accommodate groups of up to 750 guests. With state-of-the-art-in-house sound, built-in projectors and screens,

30'x30' portable dance floor, and all the tables and chairs you might need, this space is one of the most versatile anywhere. Featuring a concession stand, food prep kitchen, refreshment area, and adjacent board room, this facility can support your wedding reception, quinceanera, banquet, corporate meeting, trade show or any other event!

SSHS AUDITORIUM:

Remodeled in 2016, this 1,250-seat facility. With a state-of-the-art sound system, projection system, and comfortable seating area, this space can accommodate your group! A separate men's and women's dressing room facility sits alongside the 48'x90' stage, complete with new curtains and riggings.

SULPHUR SPRINGS MUNICIPAL AIRPORT

The Texas Airport System consists of nearly 300 airports, and not only provides the state with a safe and efficient mode of transportation. It is a vital stimulus for economic growth and development. The statewide system provides aviation-related

services that support tens of thousands of jobs and produces billions of dollars in economic activity. The state's largest employers, and many smaller businesses, rely on aviation to rapidly transport their personnel, equipment and supplies. Texas airports serve as the bases of operation for a diverse group of businesses, including airlines, air cargo companies, fixed-base operators, flight schools, maintenance facilities, government entities, agricultural applicators, restaurants, and many others. Texas' vast tourism industry is also supported by both commercial aviation services and general aviation. The millions of visitors who flock to Texas each year support a variety of tourist-related business activities, such as lodging, dining, retail and entertainment.

In addition to significant economic benefits, the Texas Airport System provides numerous essential services that enhance the quality of life, health, safety, and welfare of citizens. Examples include business development,

enhancing agricultural production, medical patient transport and evacuation, access to remote areas, law enforcement, fire protections, wildlife management and recreation.

Sulphur Springs Municipal Airport, owned and operated by the City of Sulphur Springs, is designated as a public use general aviation airport. The airport occupies approximately 400 acres of land and operates Runway 01/19, a 5,000-foot concrete runway 75 feet in width. Additional improvements include hangars, a pilot-controlled runway lighting system, Precision Approach Path Indicators (PAPIs), and two GPS WAAS-enabled instrument landing approaches.

The Airport is home to the flight department of several local businesses including, American Legend Aircraft, one of the largest manufacturers of Light Sport Aircraft in the United States, and over 70 aircraft that are used for both business and recreational purposes.



Sulphur Springs Then & Now

By **John A. Sellers,**
Local Historian

In 1849, Dr. Owen S. Davis bought 80 acres of the M. A. Bowlin survey in Hopkins County. This historic parcel of land would become downtown Sulphur Springs and the surrounding streets. Dr. Davis built his home on the west side of future North Davis Street between the present day VanSickle and Houston Streets. He divided his land into lots, including an area for the public square and business lots surrounding the square.

The square was originally larger, but Dr. Davis decided to close in the east side of the square for more building lots, so the square area was too small to accommodate a courthouse in the center.

Originally, the county seat of Hopkins County was 4 miles further north, at a community called Tarrant. When the growing town of Sulphur Springs applied for a post office in 1854, there was an existing post office with the

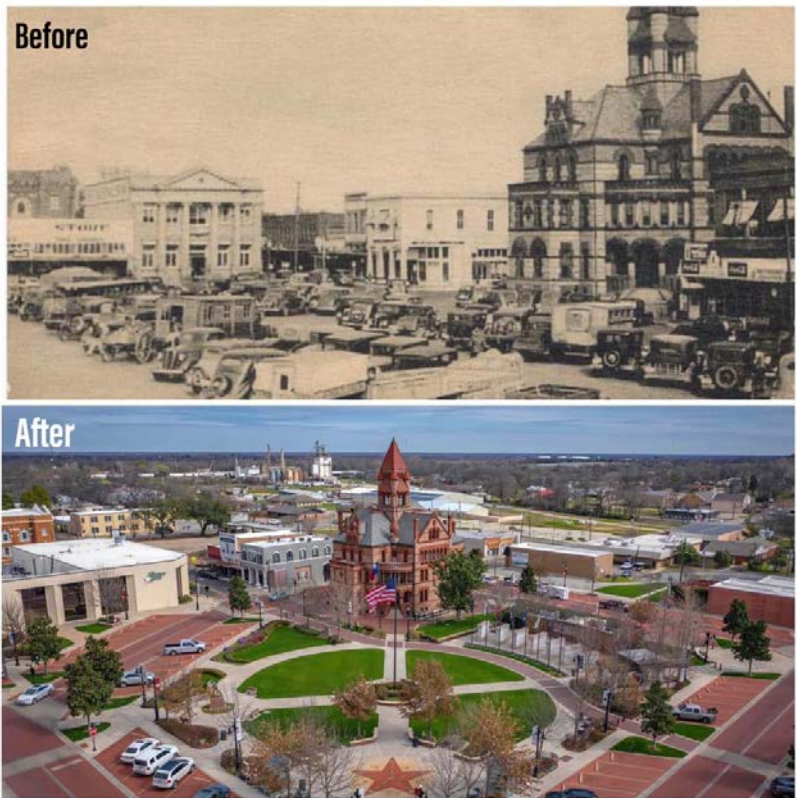
name of Sulphur Springs, so they had to choose an alternative name. Someone came up with the name of Bright Star. The post office was so named, but the community and townspeople always referred to the community as Sulphur Springs. Historic documents, letters and written references affirm this historic fact.

Sulphur Springs became the county seat in 1870, and the town's post office was permanently changed to Sulphur Springs in 1871. The town prospered in the late 1800s and had a slow and steady growth. Cotton was the primary agricultural industry. There were some attempts to market Sulphur Springs as a health resort.

Kate Effnor, a journalist, visited Sulphur Springs, in 1881 and recorded her visit with the following account of the springs and the Spring Lot: "The springs from which the town takes its name, naturally forms its more

interesting feature, both from their beautiful situation and the inexhaustible supply of water they constantly furnish. The largest spring is enclosed, making a sort of park. Traversing this park, from southeast to northwest, was once a clear stream that swarmed with fish, the fountain head of this stream, were the springs, but the constant demand from this source has reduced this to a small serpentine course, that becomes almost dry in summer. Large forest trees fill the enclosure, there is no attempt at cultivation yet, but is picturesque in this state. When the necessities of the people have grown to the need of this delightful resort, it will doubtless become formed into an ideal pleasure ground."

Unfortunately, progress and time have covered or reduced our springs. Hopefully, someday, we can reconstruct or uncover one of these springs and bring it back as a pleasant tourist stop.



Photography provided by Dakota Diener, Split Image



First Presbyterian Church



Pioneer Cafe



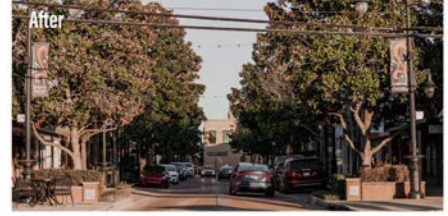
Post Office



City Hall



City National Bank



Main Street



Cash Saver



Courthouse



Davis & Connally



First Baptist Church



Main Street



First Methodist Church

Signature Solar Delivers Sustainable Energy Solutions



Signature Solar provides comprehensive and dependable solar solutions from proven manufacturers to help our customers achieve their energy goals. Our products are carefully chosen to ensure they are reliable, efficient, and effective, giving customers the peace of mind that their solar systems will work when deployed.

Having the right products is only part of the equation! To better help our customers choose the right system for their application, we offer:

- System design services
- Extended hours for phone support
- In-house tech support
- All based in Sulphur Springs

We believe solar should be accessible and attainable for everyone!

Start Your Solar Journey Today!



Our Future is **Brighter** Together!

Our mission is to empower lives across the planet by being a trusted resource for solar products and services. We believe that our employees are our greatest asset in building this bright new future, and we're dedicated to supporting each and every team member. We prioritize work-life balance by creating a supportive and collaborative team environment.

We invest in you; we grow people, and we grow careers. Our mission is empowering people and building a brighter future together. Join an environment like no other and be a part of something that aims to truly make an impact by delivering renewable energy to people across the globe.

With plenty of company perks, free-lunch Fridays, and a fully stocked kitchen, you'll feel right at home. We strive to ensure employee well-being both on and off the job by offering competitive pay, medical, dental, vision, and life insurance, paid time off, holidays, and paid parental leave.

We also offer opportunities for raises and promotions. Whether you're just starting your career or looking for a change, we're here to help you grow into a true solar professional. At Signature Solar, we're committed to helping our employees reach their full potential by providing career development paths and training in the solar industry - at no cost to employees.

Come Grow With Us!



***Hopkins County 2022
Large Business of the Year!***



SIGNATURE SOLAR

ALL YOU CAN EAT


BIG SMITH'S
BBQ & CATFISH
Established Sept. 1 1989

Beef Ribs, Catfish & Shrimp

**Come out Thursday 5-8 p.m.,
Friday and Saturday from 5-9 p.m.**

Wednesday-Thursday 11am - 8pm, Fri./Sat. 11am-9pm
Sunday 11 am -2 pm,
3 miles south of Walmart on Hwy. 154

903.438.1547

[drink local.]

FOSTER'S PLACE

RESTAURANT & PUB

PICKTON, TEXAS

Hours of Service:
Friday 4 p.m. - 10 p.m. | Saturday 11 a.m. - 10 p.m.
Sunday 11 a.m. - 9:30 p.m.
Monday 4 p.m. - 9:30 p.m.

Downtown SULPHUR SPRINGS



WE CATER!
(903) 919-3760

This was our first visit! Was so good! Our waitress what the sweetest! The vibe, the food, the staff....we will be back!



Los Mochis
Mexican Restaurant



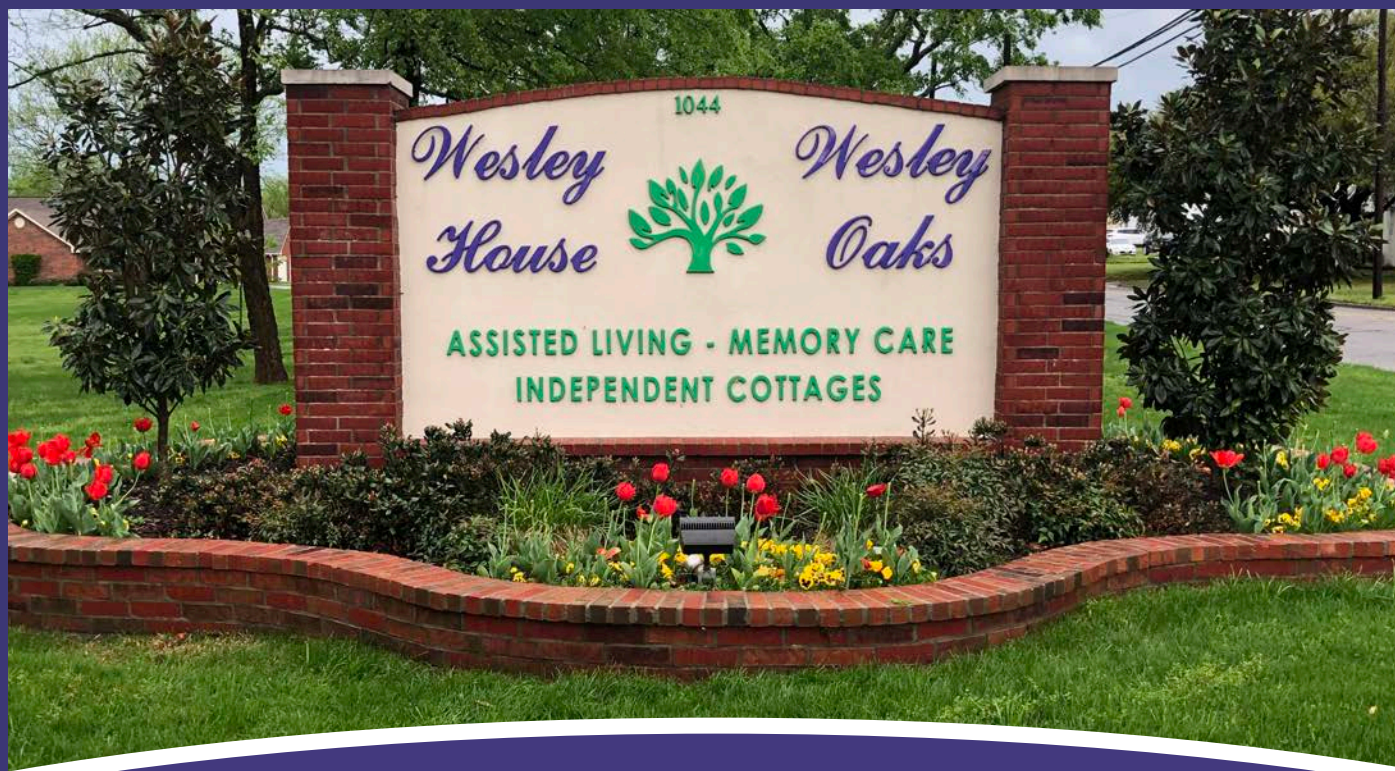


Add some magic to your day!

A unique place with a great atmosphere and AMAZING homemade ice cream, made on site. We make shakes, floats, malts, banana splits, sundaes, coffee, iced coffee, lattes, brownies, & cookies.

The
Magic Scoop
HOMEMADE ICE CREAM

Monday-Friday 11:00-10:00, Saturday 10:00-10:00 and Sunday 1-8
111 Gilmer Street Downtown Sulphur Springs



.....

The Wesley House is the perfect place for seniors who value their independence, yet need some help with daily activities, such as bathing, dressing and medication reminders. We focus on individual wellness, and encourage continued independence with a tailored plan of assistance provided by well-trained team members available 24-hours a day.

.....



1044 Church Street Sulphur Springs
(903) 439-0529

SAVINGS ACCOUNTS FOR ALL AGES

Consumer

IRAs

CDs

& more!

*Banking
and lending
with a team
you know
and trust.*



Banking Texas Since 1889



Mortgage | Construction | Commercial | Agricultural | Personal Loans

bankatcnb.bank

